

AMERICAN RELATIONS WITH JAPAN



ATTACK ON PEARL HARBOR

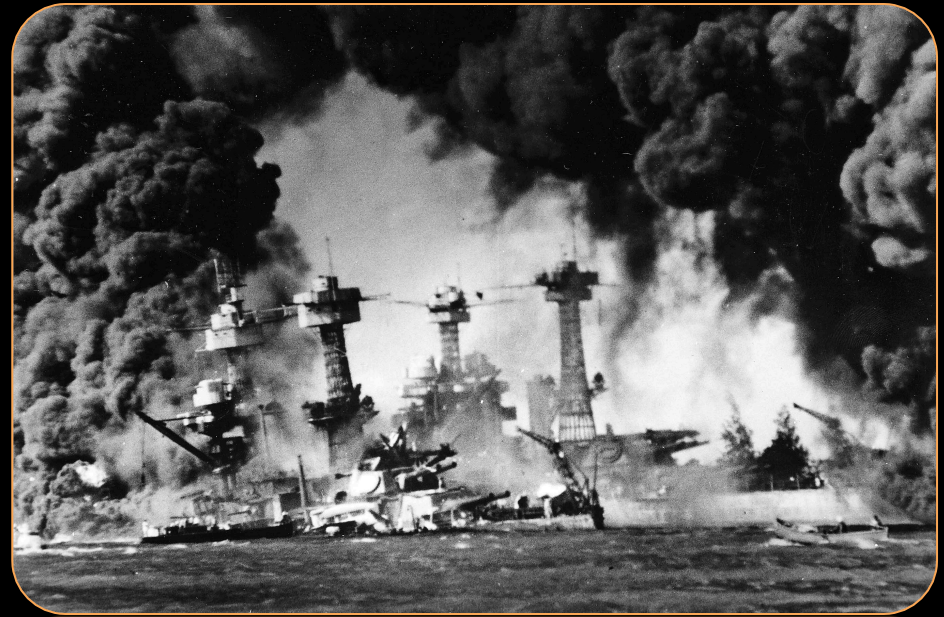
WHY WAS PEARL HARBOR ATTACKED?

- The Japanese dreamed of an Empire in Asia (Imperialism)
 - This quest began in 1931: took over Manchuria
 - The Chinese resisted and Japan sent troops into take control
- Economic Strangulation
 - By 1939, major coastal ports in China were seized
- By July 1941, Japan took over French Indochina (Southeast Asia), Thailand, Burma, and the Philippines.



WHY WAS PEARL HARBOR ATTACKED?

- The U.S. and Great Britain froze Japanese assets in their countries.
 - Cut off raw materials
 - Demanded that the aggression stop
 - Japan asked the U.S. to abandon China, but FDR refused.
 - Japan promised not to attack the Soviet Union and not to declare war against the U.S. if Germany and America went to war.
- Japanese Army
 - Army= 2,400,000 trained ground troops and
 - Air Force= 7,500 planes
- U.S. Army
 - Army= 1,500,000
 - Air Force= 1,157 planes
 - Navy= 347 war ships
- Japan moved forward with war plans
 - Believed the U.S. Pacific Fleet at Pearl Harbor, Oahu, Hawaii was their only threat—planned a surprise attack
 - Hoped it would cripple the U.S. Navy



THE BREAK-UP NOTE

- Japanese wrote a note breaking diplomatic ties with the U.S. on December 6, 1941.
 - Top secret order is given
 - It was to be delivered in the early afternoon
 - American intelligence received the information at the same time the Japanese ambassadors did.
 - After receiving the note the Americans thought an attack would take place in Southeast Asia
 - The War Dept. sent out a warning but radio contact with Hawaii was temporarily broken—received 4 hours later



TIMELINE

- At 7:02 a.m., December 7th, 1941 radar picked up blips of approaching aircrafts
- At 7:55 a.m., the first Japanese bombs fell on Pearl Harbor
 - Within ½ hour, the U.S. Pacific fleet destroyed:
 - 188 aircrafts destroyed
 - 159 aircrafts damaged
 - 1,000 sailors on the Arizona drowned or burned to death
 - 2,403 Americans died during the attack, and 1,178 wounded
- The Japanese continued to launch attacks throughout the Pacific that day: Guam, Hong Kong, Midway Islands, Wake Islands.
 - The next day, FDR declared war on Japan

THE EFFECT OF PEARL HARBOR

- U.S. was able to overcome the damage.
- Aircraft carriers weren't touched
 - Ended up being a decisive weapon on naval war in the Pacific (fighting against Japan) more so than the battleship
- Submarines weren't attacked
- Able to fix most of the ships that were damaged in the attacks
- Bitter defeat for the U.S.
 - American territory attacked
 - Lives Lost
 - Unified Americans
 - Led to desire for revenge

